

The information included on this graphic representation has been compiled from a variety of sources and is subject to change without notice. Kleinfelder makes no representations or warranties, express or implied, as to accuracy, completeness, timeliness, or rights to the use of such information. This document is not intended for use as a land survey product nor is it designed or intended as a construction design document. The use or misuse of the information contained on this graphic representation is at the sole risk of the party using or misusing the information.

Existing Monitoring Locations from SanGIS map dated 5/6/2016.
 Hydrologic features from USGS
 Service Layer Credits: © 2019 Microsoft Corporation © 2019 DigitalGlobe
 ©CNES (2019) Distribution Airbus DS © 2019 HERE

LEGEND

- ⊕ Active Production Well
- DWR Well
- ⊙ USGS Monitoring Well
- Stream
- ▭ San Pasqual Groundwater Basin Boundary/Project Service Area
- ▭ Water Body
- ▭ City of San Diego Municipal Limits
- ▭ Other Municipalities



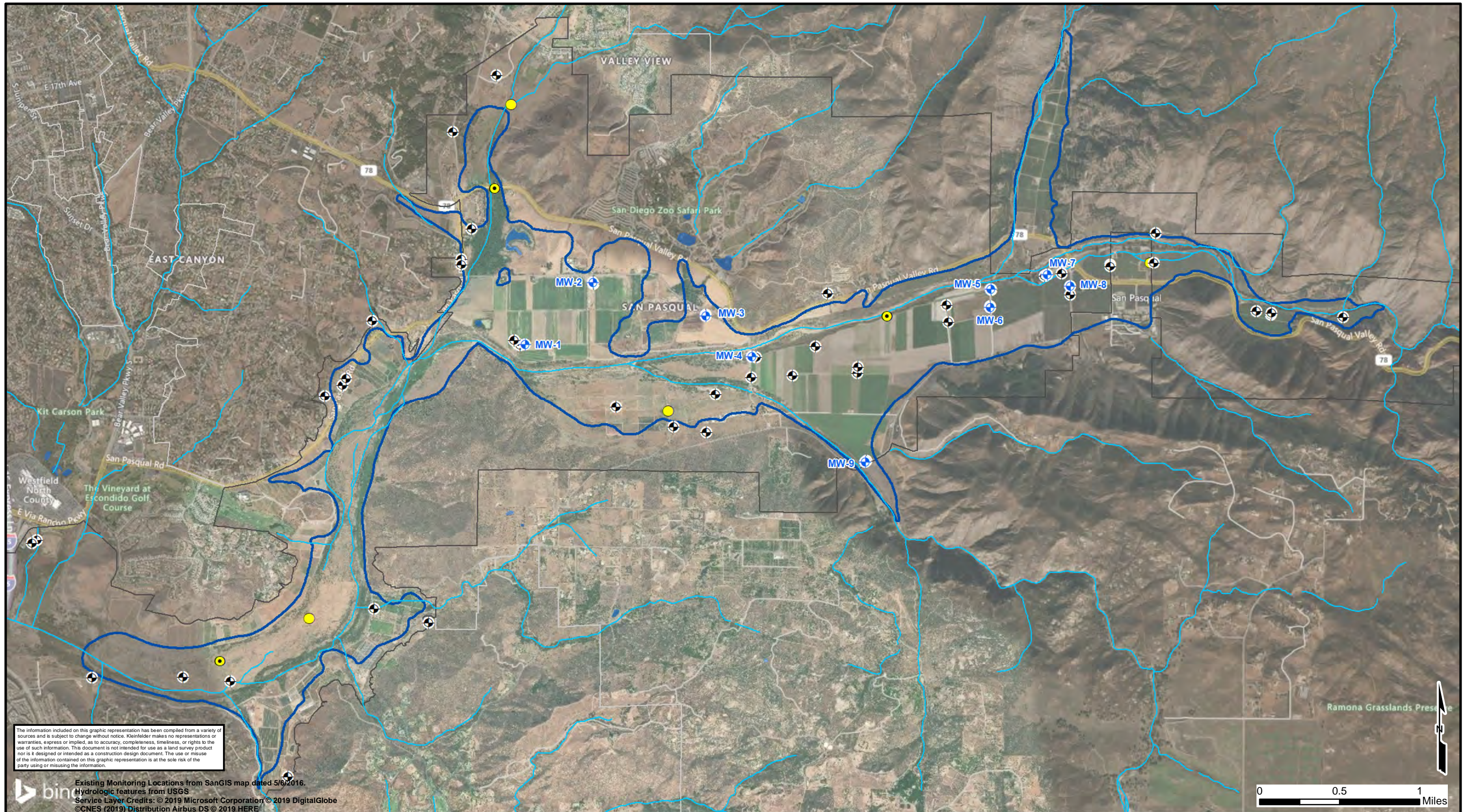
PROJECT NO.: 20182085.012
 DRAWN: NOV 2019
 DRAWN BY: KFH
 CHECKED BY: JL
 FILE NAME: Siting_F1.mxd

EXISTING CITY WELLS

WELL SITING STUDY
 NESTED GROUNDWATER MONITORING WELLS
 SAN PASQUAL VALLEY GROUNDWATER BASIN

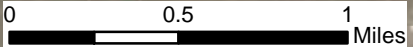
FIGURE

1



The information included on this graphic representation has been compiled from a variety of sources and is subject to change without notice. Kleinfielder makes no representations or warranties, express or implied, as to accuracy, completeness, timeliness, or rights to the use of such information. This document is not intended for use as a land survey product nor is it designed or intended as a construction design document. The use or misuse of the information contained on this graphic representation is at the sole risk of the party using or misusing the information.

Existing Monitoring Locations from SanGIS map dated 5/6/2016.
 Hydrologic features from USGS
 Service Layer Credits: © 2019 Microsoft Corporation © 2019 DigitalGlobe
 ©CNES (2019) Distribution Airbus DS © 2019 HERE



LEGEND

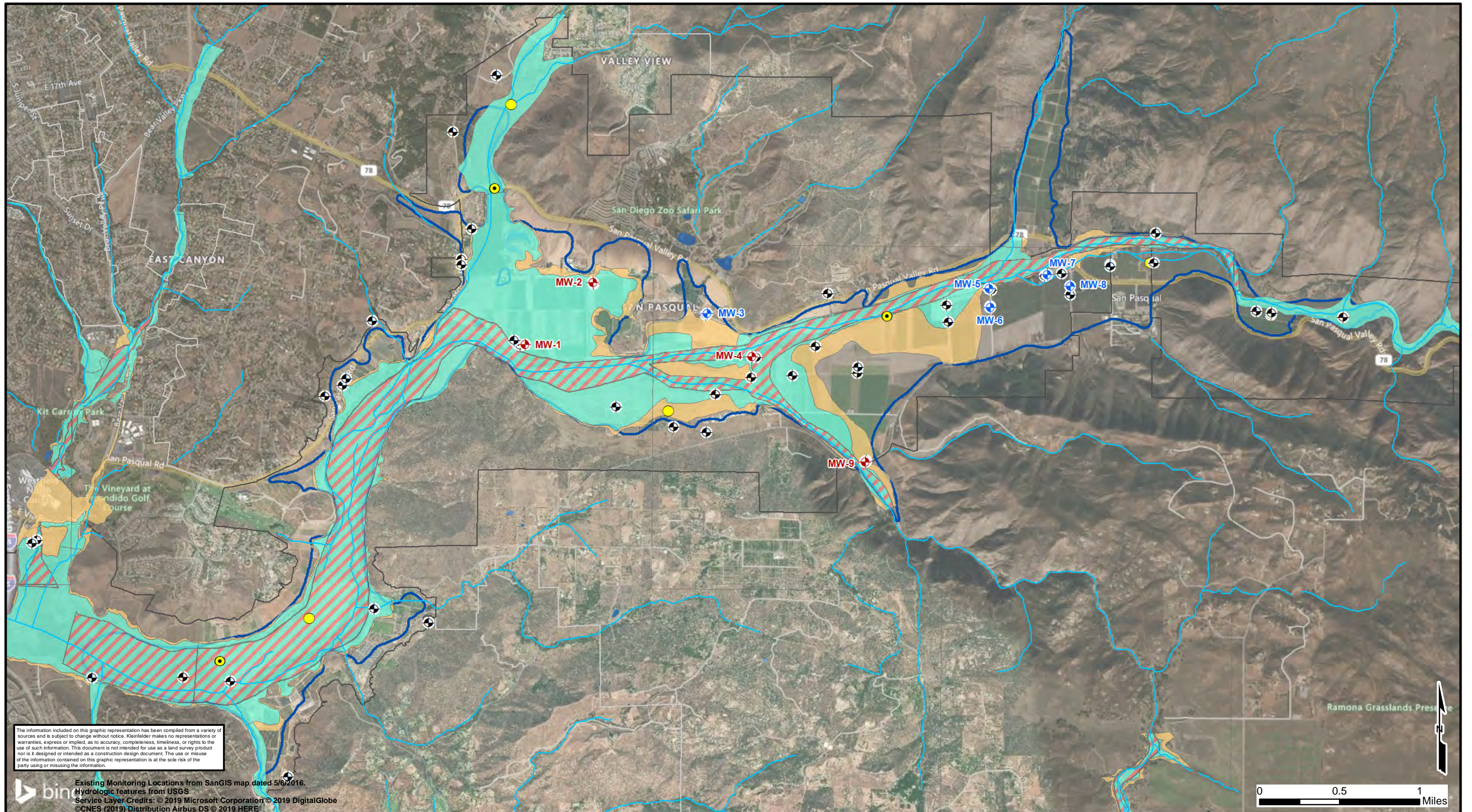
- Proposed Nested Groundwater Monitoring Well
- Active Production Well
- DWR Well
- USGS Monitoring Well
- Stream
- San Pasqual Groundwater Basin Boundary/Project Service Area
- Water Body
- City of San Diego Municipal Limits
- Other Municipalities



PROJECT NO.:	20182085.012
DRAWN:	NOV 2019
DRAWN BY:	KFH
CHECKED BY:	JL
FILE NAME:	Siting_F2.mxd

NESTED WELL ALTERNATIVE LOCATIONS
WELL SITING STUDY NESTED GROUNDWATER MONITORING WELLS SAN PASQUAL VALLEY GROUNDWATER BASIN

FIGURE
2



The information included on this graphic representation has been compiled from a variety of sources and is subject to change without notice. Kleinfelder makes no representations or warranties, express or implied, as to accuracy, completeness, timeliness, or rights to the use of such information. This document is not intended for use as a land survey product nor is it designed or intended as a construction design document. The use or misuse of the information contained on this graphic representation is at the sole risk of the party using or misusing the information.

Existing Monitoring Locations from SanGIS map dated 5/6/2016.
 Hydrologic features from USGS
 Service Layer Credits: © 2019 Microsoft Corporation © 2019 DigitalGlobe
 ©CNES (2019) Distribution Airbus DS © 2019 HERE

LEGEND	
Proposed Nested Groundwater Monitoring Well - Within Floodplains	Yellow circle with black dot: DWR Well
Proposed Nested Groundwater Monitoring Well	Yellow circle: USGS Monitoring Well
Active Production Well	Blue line: Stream
	Blue outline: San Pasqual Groundwater Basin Boundary/Project Service Area
	Light blue area: 100-Year Floodplain
	Red and blue hatched area: Regulatory Floodway
	Orange area: 500-Year Floodplain
	White area: Area Outside the 500-Year Floodplain
	Blue area: Water Body
	Black outline: City of San Diego Municipal Limits
	Grey outline: Other Municipalities



PROJECT NO.:	20182085.012
DRAWN:	NOV 2019
DRAWN BY:	KFH
CHECKED BY:	JL
FILE NAME:	Siting_F3.mxd

NESTED WELL ALTERNATIVE LOCATIONS - FLOODPLAINS	FIGURE 3
WELL SITING STUDY NESTED GROUNDWATER MONITORING WELLS SAN PASQUAL VALLEY GROUNDWATER BASIN	



The information included on this graphic representation has been compiled from a variety of sources and is subject to change without notice. Kleinfelder makes no representations or warranties, express or implied, as to accuracy, completeness, timeliness, or rights to the use of such information. This document is not intended for use as a land survey product nor is it designed or intended as a construction design document. The use or misuse of the information contained on this graphic representation is at the sole risk of the party using or misusing the information.

Existing Monitoring Locations from SanGIS map dated 5/6/2016.
 Hydrologic features from USGS
 Service Layer Credits: © 2019 Microsoft Corporation © 2019 DigitalGlobe
 ©CNES (2019) Distribution Airbus DS © 2019 HERE

LEGEND

- ◆ Proposed Nested Groundwater Monitoring Well - Recommended
- ⊕ Active Production Well
- ▭ Water Body
- DWR Well
- ▭ San Pasqual Groundwater Basin Boundary/Project Service Area
- ⊕ City of San Diego Municipal Limits
- ⊕ USGS Monitoring Well
- ⊕ Proposed Nested Groundwater Monitoring Well
- ▭ Other Municipalities



PROJECT NO.:	20182085.012
DRAWN:	NOV 2019
DRAWN BY:	KFH
CHECKED BY:	JL
FILE NAME:	Siting_F4.mxd

RECOMMENDED NESTED WELL ALTERNATIVE LOCATIONS

WELL SITING STUDY
 NESTED GROUNDWATER MONITORING WELLS
 SAN PASQUAL VALLEY GROUNDWATER BASIN

FIGURE

4